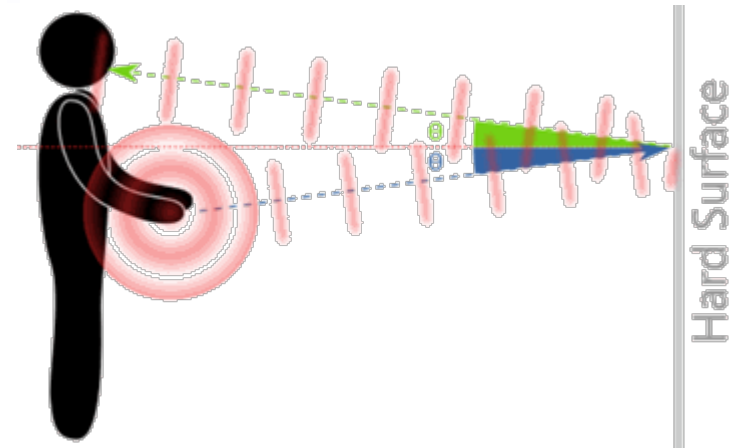




**Midwest Genetics
Network**
Region 4

Pop Quiz – What is ECHO?





Move knowledge, not people...

Project ECHO is committed to addressing the needs of the most vulnerable populations by equipping communities with the right knowledge, at the right place, at the right time.

Introduction to Project ECHO: Moving Knowledge, not People

WHAT IS THE HISTORY ECHO

HOW AND WHERE IS IT BEING USED

HOW CAN MGN USE ECHO TO INCREASE ACCESS TO GENETIC SERVICES

WHAT ELSE CAN ECHO BE USED FOR



**Midwest Genetics
Network**

Region 4

The ECHO Approach



NAOMI CLANCY, MD
FAMILY PHYSICIAN
BAYARD, NM

ECHO is Built Around 4 Key Principles

Four Principles of the ECHO Model



Use Technology to leverage scarce resources



Share “best practices” to reduce disparities



Apply case-based learning to master complexity

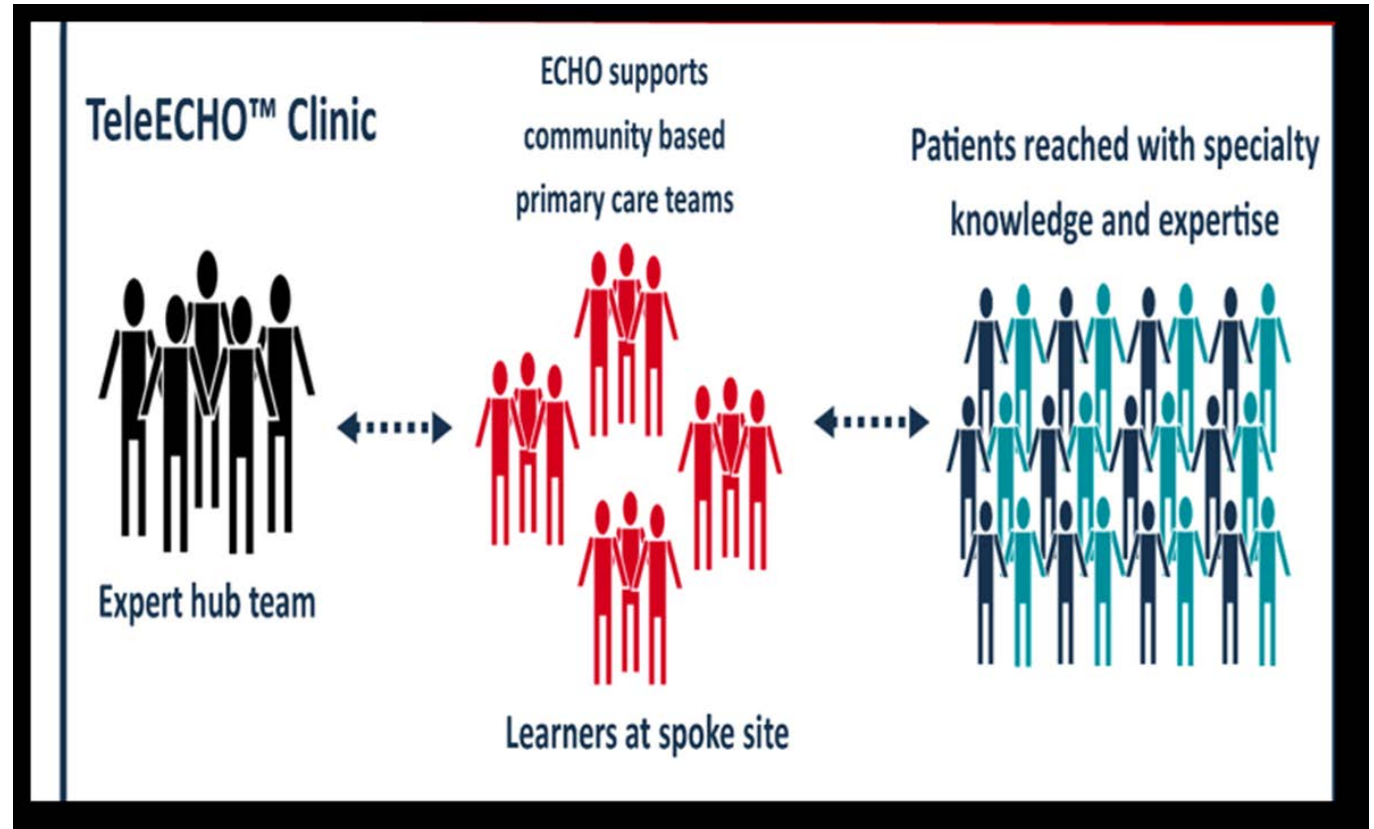


Evaluate and monitor outcomes

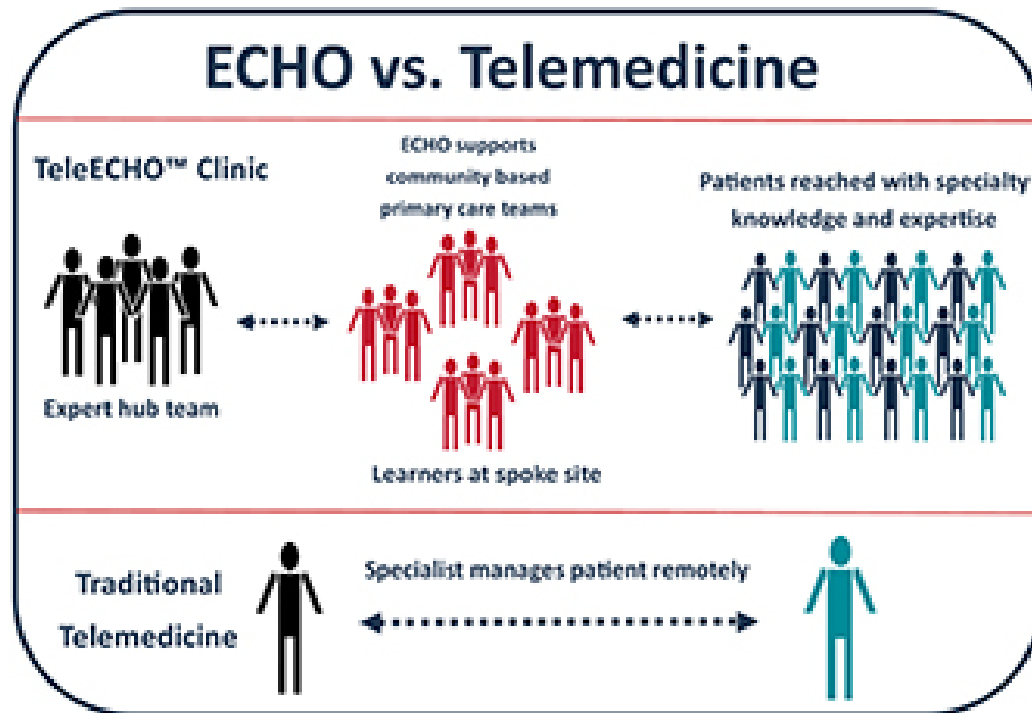
ECHO Uses a Hub and Spoke Model

Hub and Spoke Model for knowledge-sharing

- expert teams lead virtual sessions
- Increases capacity to deliver best-practice care to the underserved in their own communities



How is ECHO Different than Telehealth?

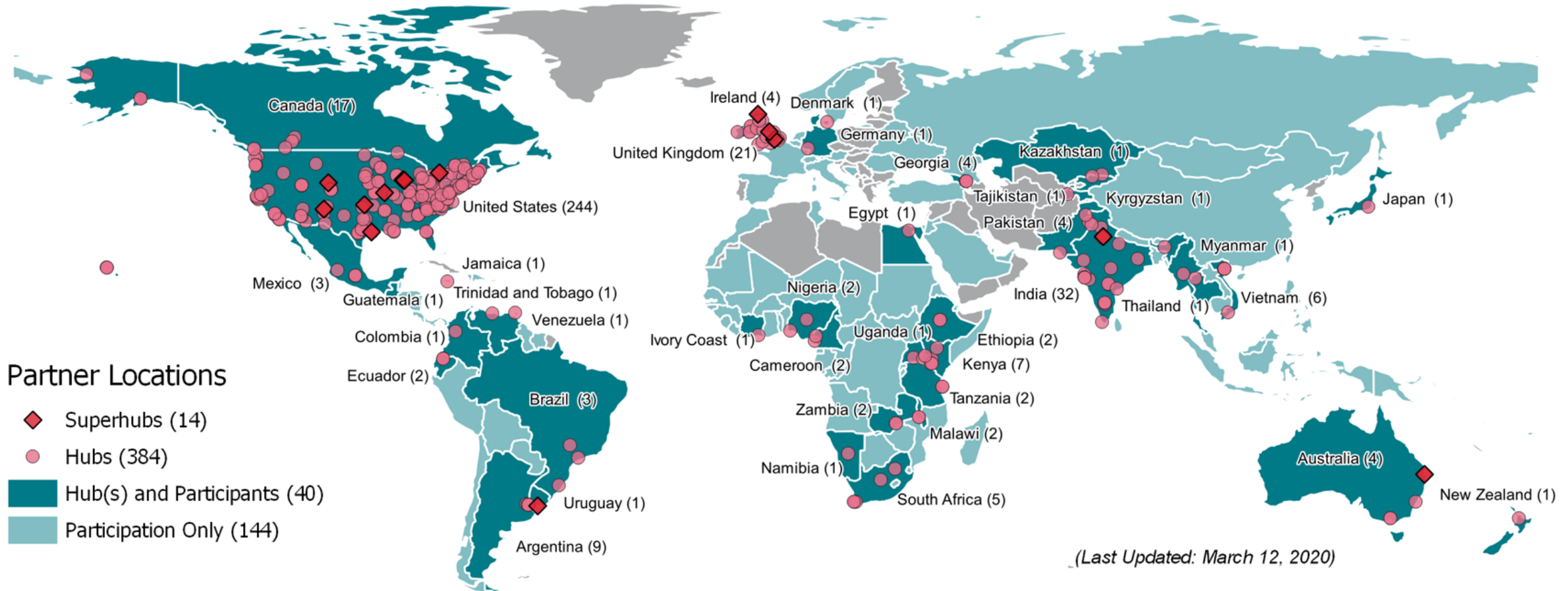


Increases Workforce Capacity to Improve Access to Care, no direct care provision



Overcomes geographic and transportation barriers to Improve access to care, direct care provision

ECHO Hubs and Superhubs



ECHO Hubs

Countries	Hubs	Programs
1	251	609





ECHO Stats

Genetics Hubs – 0

Rare Disease Hubs - 9

Public Health Hubs – 6

Precision Public Health Hubs - 0

Active Today

Hubs
412

Programs
896

Countries
41

Reach Metrics

7/3/2008 to 9/22/2020

Learners	Organizations	Communities	Countries
140,270	28,936	7,460	164

Learning Hours	Attendances	Sessions	Programs / Cohorts
1,467,503	964,805	40,472	2,139

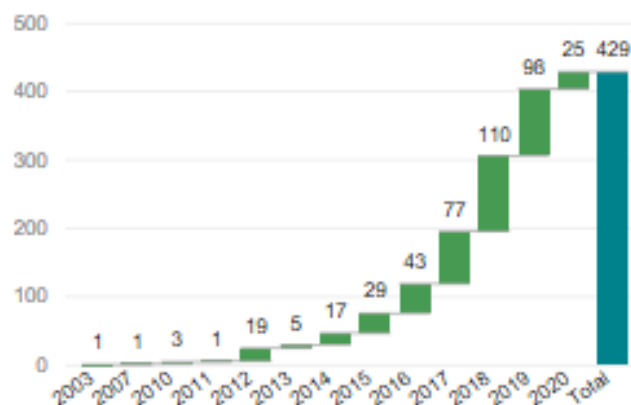
Average Session

Learners	Cases	Duration
24	1.2	91 minutes

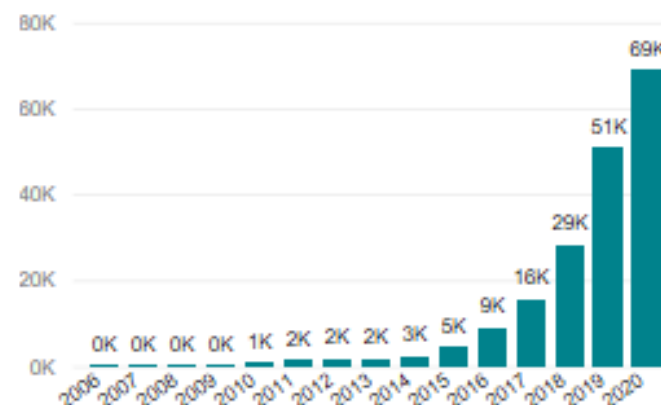
Average Learner

Attendances
6

Hubs Launched per Year



Learners per Year



What does this model look like for MGN ?



Case-Based Learning for Primary Care provider about caring for patients with genetic conditions

Community of practice to support providers that care for Plain People

Community of practice to support family engagement

What other
project areas
should we be
considering?

(Raise your
hand to share
or chat your
idea)



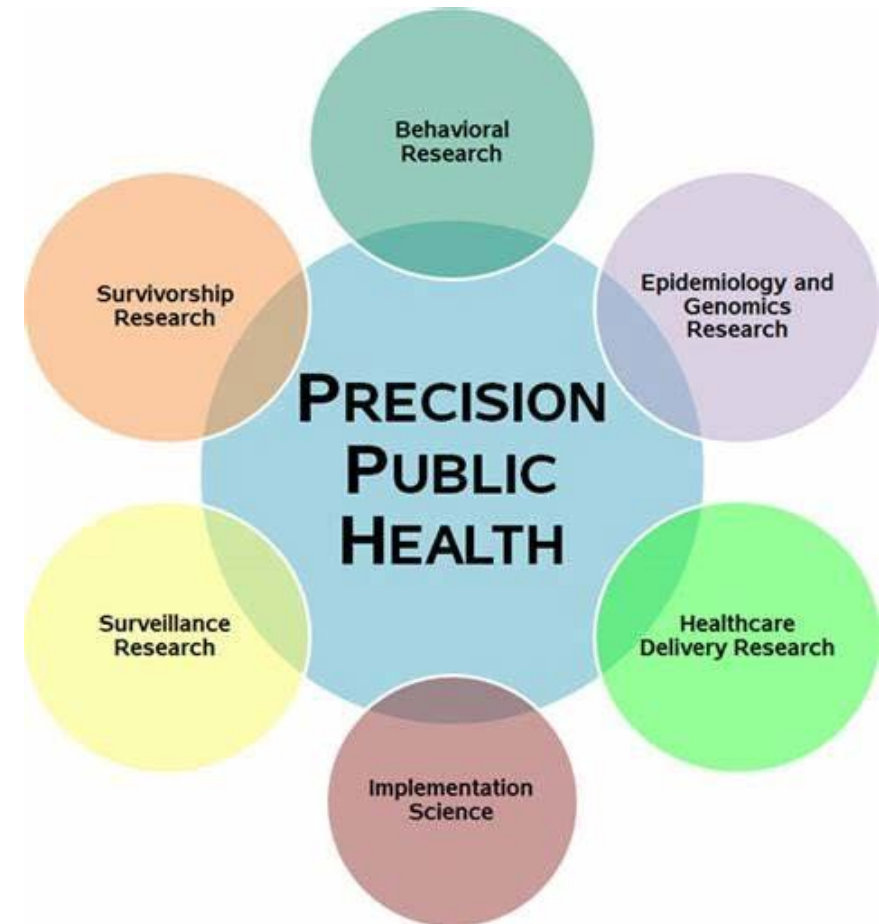
How are Echo Programs Sustained



Hub Focus: Precision Public Health

Precision Public Health is delivering the right intervention at the right time, every time, to the right people.

- Muin Khoury, MD, PhD, Director, Office of Genomics and Precision Health, Centers for Disease Control and Prevention





Any Questions ?